

SoftPro RANGE

Protect your skin, heating system and appliances from the damaging effects of hard water.



SoftPro RANGE

Protect your skin, heating system and appliances from the damaging effects of hard water.

BENEFITS

There are many benefits of softened water. SoftPro™ helps prevent the drying effects that are caused by hard water and leaves your skin feeling very smooth. Financial savings are made because of the reduced wear on all equipment such as taps, showers, washing machines and heating systems. Cleaning becomes far easier and your bathroom appliances will last many more years retaining their just new look.

INSTALLATION

Installed at the point where mains cold water enters the property. A bridge is cut into the mains cold water supply and water diverted through the equipment of your choice.

SOFTENING BY THE SoftPro™

- Water softeners remove calcium carbonate, iron and magnesium (scale) impurities from all household water.
- Utilises the highest grade resin & valves for longevity & high performance, 10 year guarantee on resin.
- Metered valve effectively reduces normal salt consumption by up to 50%.
- Alleviates skin irritation e.g. eczema and psoriasis.

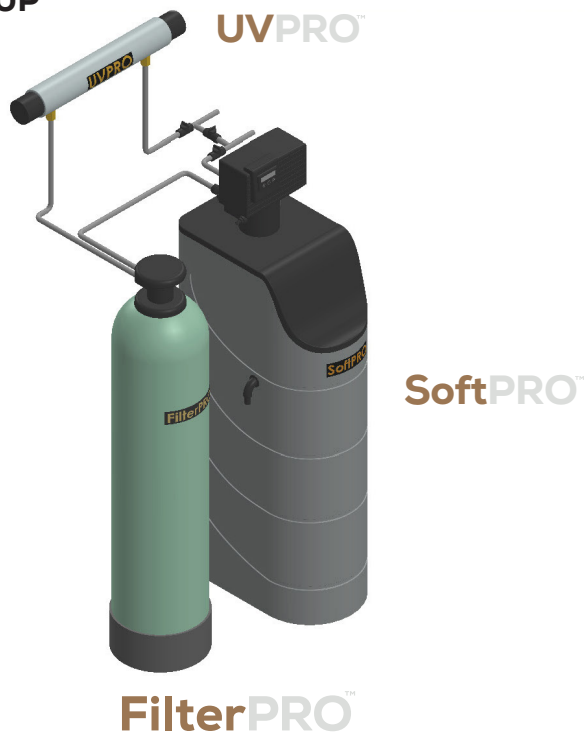
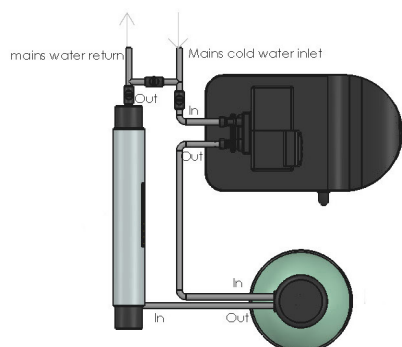
SoftPro™ MODEL RANGE

SoftPro™ MODEL	SoftPro-15™	SoftPro-22™	SoftPro-28™	SoftPro COMMERCIAL™
Flow rate	1cmh @ 4BarG.	2-3cmh @ 4BarG.	3-4cmh @ 4barG.	Subject to URS.
Chamber size	Height 370mm	Height 890mm	Height 890mm	Subject to URS.
Valve (RWPMD1) type				Subject to URS.
Inlet/outlet port size	1" (m)BSP	1" (m)BSP	1" (m)BSP	Subject to URS.
Voltage	N4VAC	4VAC	24VAC	240VAC
Vacuum Breaker				Subject to URS.
Max. working pressure	4BarG	4BarG	4BarG	4BarG
Ambient water temperature	16-22°C	16-22°C	16-22°C	16-22°C
Optional service reminder	Yes	Yes	Yes	Yes
BMS contact	No	No	Salt level	Salt level

WHOLE HOME

Luxurious bathing water; SoftPro™, FilterPro™ and UVPro™ provide total home water treatment solutions.

TOTAL HOME WATER TREATMENT - SETUP



Left
SoftPro-15™, FilterPro-15™ and UVPro-15™
Whole Home installation.
Suitable for 1 cubic meters/
hour treatment. Sub-
counter installation.

Right
SoftPro-22™, FilterPro-22™ and UVPro-22™
Whole Home installation.
Suitable for 2 cubic meters/
hour treatment

WHOLE HOME

Luxurious bathing water; SoftPro™, FilterPro™ and UVPro™ provide total home water treatment solutions.

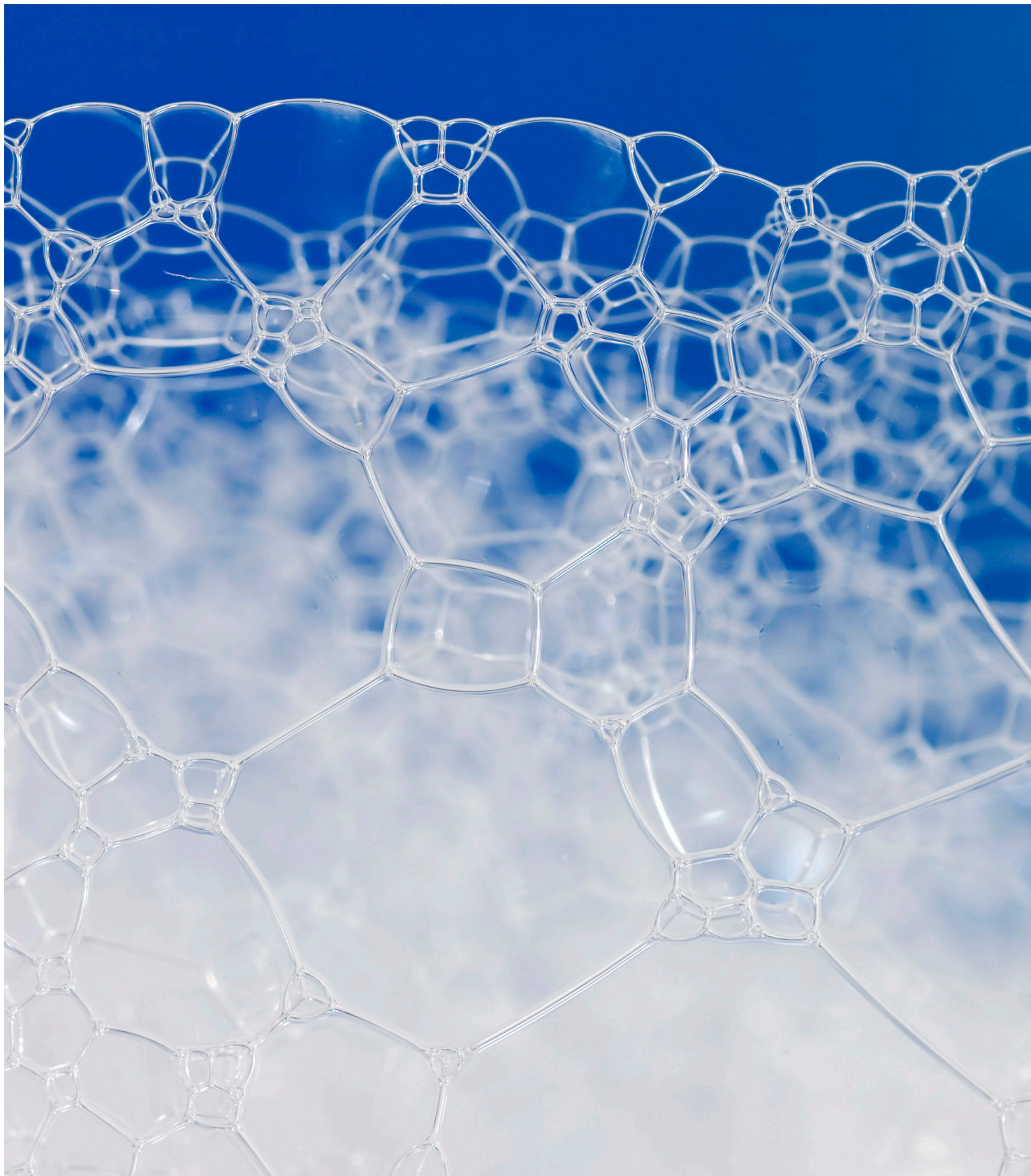
SoftPRO™

SoftPRO-28MM 24-7 series

Light Commercial/Residential Duplex system composed of a fibre-reinforced polymer valve body for superior strength and durability, non-corrosion and UV-resistance.

- Continuous service flow rate of 74ltr/m with a backwash of 31ltr
- Duplex system delivers soft water 24/7 with no down time during regeneration. Valve simply switches to standby tank when capacity is used and independently regenerates the exhausted resin, placing it in standby ready for the next change.
- Soft water regeneration for optimum operating efficiency and minimum maintenance
- Compact system
- Choice of salt saturator tanks (salt storage bin) to suit available floor space.





PUREH2O™
WHOLE HOME WATER TREATMENT

Call 01483 617000 to book an installation
or find out more at pureh2o.co.uk

The PureH2O™ E&OE

MADE
IN GREAT
BRITAIN 